

# LEIGH CREEK NEWS



The official opening of the trail was undertaken by Beverley Patterson, Glenda Wilton and Linda Coulthard (pictured above with the sign)



Noel Wilton welcomed everyone to Country in both Adnyamathanha and English.

## AKURRA TRAIL OFFICIAL OPENING

An initiative by the Leigh Creek Area School has led to the opening of a new walking trail from Leigh Creek to Aroona Dam, which was recently celebrated by over 70 people.

Funding accessed by the school through the SA Healthy Towns Challenge provided the catalyst for the 10.5km Akurra Trail, which provides a new recreation experience for locals and visitors.

The project was facilitated by the Leigh Creek Community Progress Association (LCCPA) and Outback Communities Authority, with the school engaging the University of Adelaide's Mobile Language Team and Adnyamathanha Elders to develop the trail and interpretive signs. These signs provide information about Adnyamathanha culture including seasons, plants and animals, and are also in Adnyamathanha language.

Local community members assisted with trail definition, installation of interpretive signs and a number of tables and seats.

NPWS provided guidance with trail design and construction, plus feedback and design of the interpretive signs.

National Parks and Wildlife Manager Tony Magor stated that providing new visitor experiences has been a focus since DEW took over management responsibility of Aroona Dam in 2017, with non-motorised boat access and fishing already initiated.

'The work undertaken by the different project partners has been excellent. It provides a new recreation experience for both Leigh Creek locals and visitors, improving people's wellbeing. It also provides a learning experience and raises awareness of Adnyamathanha culture through the interpretive signs. NPWS thanks everyone involved in this project and they should be proud of the outcome.'

'The project represents a wonderful community collaborative effort and will hopefully be the first of many walking trails from Leigh Creek' said Heather Hage from the LCCPA

NPWS and the Leigh Creek Community Progress Association will now turn their focus to upgrading and re-opening an old walking trail with associated interpretive signs and seating that provides a stunning view over Aroona Dam.



# AROONA DAM CLOSURES FOR YOUR SAFETY

Since the Department for Environment and Water took on management responsibility of the Aroona Dam sanctuary, a number of changes to the way the sanctuary is managed has occurred. While new recreation experiences such as on water non-motorised boat access and fishing through stocking with Yellow belly and Murray Cod has occurred, managing the sanctuary's biodiversity has also changed.

Prior to DEW being involved at Aroona Dam, goat control was undertaken by mustering. Now goat control is undertaken via an integrated approach through DEW's Bounceback program.

The Bounceback program is a landscape scale restoration program managing threats such as feral animals and weeds, to benefit biodiversity in the Flinders Ranges, Olary Ranges and Gawler Ranges. For Aroona Dam, goat control now involves goat mustering plus other ground and aerial control methods which involves shooting.

When these shooting programs are underway, Aroona Dam is closed in the interest of public safety. Notices are put up in Leigh Creek as well as at entry point Aroona Dam, and these entry points are closed to the public - which includes visitors and locals.

During the most recent ground control program at Aroona Dam, two locals entered via a closed entry point that had a sign stating the sanctuary was closed. Fortunately people undertaking the control program saw the two locals and questioned why they were in the sanctuary when it was closed for ground control operations. This was a very fortunate outcome as a worst case scenario incident would have been tragic.

In the interest of your own safety and potentially life, please adhere to closure notices and signs and do not under any circumstances enter Aroona Dam when it is closed for goat control programs.



Weed identification in Leigh Creek with Chris Brodie from the State Herbarium, Matthew Westover Landscapes SA Arid Lands and Shannon Robertson new and emerging weeds PIRSA.



Shaewanah Coulthard with the Trail sign at the Akurra Trail Launch



Celebration Community BBQ after the Akurra Trail opening

Bin Collection -  
Day Change  
The Leigh Creek and  
Copley Rubbish Bin  
Collection Day has  
moved to Tuesdays



Changes to the the Leigh Creek  
Dump opening times will now be:  
Saturday 10am - 2pm  
Tuesday 10am - 2pm



Leigh Creek Aerodrome has been a hive of activity with the SA Water Pipeline workers flying in and out and many other visitors too.

#### Ash Disposal

When disposing of ash from fireplaces and other wood-fuelled heaters or cooking appliances, ensure it has cooled completely and consider dampening it down to ensure it has been completely extinguished.

Also try to avoid disposing of ash in waste bins. Consider a garden bed or another safe outdoor location for disposal. Another tip is to make sure your fireplace chimney is clean and it's properly ventilated.



Friday 25th June was Take your dog to work day - Introducing Missie Bowshire

## 2021 EVENTS

All events are subject to COVID 19 restriction requirements at the time of the event

Pfizer and AstraZeneca Vaccination Clinic's

At Leigh Creek Health Clinic

**July Wednesday 21st to Thursday 22nd**

**August Wednesday 11th to Thursday 12th**

To book an appointment call 8668 7470

### Copley & Districts Gymkhana

Meet & Greet from 4pm, Friday 6th Aug

**Saturday 7th August**

Kids Gymkhana 8am followed by Adults  
Kids Motorkhana 1pm followed by Adults  
Food and Bar available throughout the day

DJ Saturday Night

**Wednesday 20th October**

**Flinders Family Fun Day - Leigh Creek Stadium and Oval**

Further details to be announced

If you have an event that you would like to be included in this calendar please call Tracy on (08) 8675 2126

The Angepena Airstrip has been upgraded to enable emergency, medical and health services to support and assist Nepabunna Community, local pastoralists and the local region in times of emergency.



# LEIGH CREEK TRANSFORMATION

## Leigh Creek Transformation update

The Task Force Chair Paul Case introduced the presenters and outlined the format for the evening. Presentations were made by Vicki Beard, Task Force Project Manager, Simon Lambert, McGees Property the recently appointed residential and commercial agent and Dan Luscombe, Property Manager, Department for Infrastructure and Transport.

The best source of up to date information is the OCA dedicated transformation webpage <https://oca.sa.gov.au/LeighCreekTransformation> including local works opportunities, previous presentation slides (click on the June link under the Community Meetings heading) and the high-level schedule of transformation milestones calendar.

Any property enquires or maintenance issues can to be made to [DIT.L LeighCreekProperty@sa.gov.au](mailto:DIT.L LeighCreekProperty@sa.gov.au).

**The next Community Conversation will be on Thursday 29th July from 5.30pm - 7.30pm in the Leigh Creek auditorium/cinema, all welcome.**

### Local Work Opportunities

To assist in identifying businesses and people located in the region and surrounding regional area who are interested in working with and supplying to the successful Contractor please email [rowan.magore@sa.gov.au](mailto:rowan.magore@sa.gov.au) to register your interest or alternatively pop into the OCA - Leigh Creek Office where Joanne or Tracy can collect your details.



One of our smaller attendees at the June Community Meeting

### Access to Property in Leigh Creek

Department for Infrastructure and Transport wishes to advise that SA Water personnel from technical services are attending the township later this week and next week to review the locations of the sewer inspection points and locations of the SA Water meters to confirm they are correctly located. In order to assist, we are indicating that SA Water contractors may need to walk or access the front yard of some residential or commercial properties within the township for this purpose.



Vicki and Dan presenting



### Asbestos Removal Works in Leigh Creek

The Community safety is an upmost priority with any undertakings for all transformation works. With asbestos removal contractors undertake atmospheric air monitoring which includes environmental air quality testing and inspections, to comply with SafeWork SA and other Acts and Regulations.



Simon Lambert presenting at the June Community Meeting

### McGees Property Agent Appointed for Residential and Commercial Property in Leigh Creek

For any discussions regarding property please contact:

Simon Lambert  
0408 846 999

[slambert@adl.mcgees.com.au](mailto:slambert@adl.mcgees.com.au)

### Contact us

Outback Communities Authority  
- Leigh Creek Office

E: [oca@sa.gov.au](mailto:oca@sa.gov.au)

Phone: (08) 8675 2126



Regional  
Development  
*Australia*  
F A R N O R T H

# ECONOMIC DEVELOPMENT FORUM



## *Leigh Creek*

Thursday July 15th 2021 • Leigh Creek Outback Resort • 10am–2.30pm

### UPDATE

Special presentation from Australian Tourism Data Warehouse.  
A chance to learn how to improve your business visibility for FREE!

Best of all? It is driving clicks direct to your website – commission free. This session is available at no cost to operators and will provide the opportunity to learn more about how you can optimise your ATDW listings, leverage the platform for your digital promotion and increase your presence on websites such as [southaustralia.com?](http://southaustralia.com?).

### PLUS

Hear updates from guest speakers about –  
**STRZELECKI ROAD UPGRADE – WORLD HERITAGE FLINDERS RANGES**  
**RURAL BUSINESS SUPPORT – AUSINDUSTRY –**  
**LEIGH CREEK ENERGY –**  
**NBN CO.**  
plus others



***R.S.V.P to [reception@rdafn.com.au](mailto:reception@rdafn.com.au) or  
call (08) 8641 1444 by June 30 2021***

# FARINA OFFICIAL OPENING OF PATTERSON'S HOUSE



Rev Trevor Briggs returning the Cross from the former Farina Church of England, that has been held in trust at the Leigh Creek church until now, being presented to Bill Brock



The cricket match on the Saturday with Farina versing the rest of the world. Farina emerged as the winners on the day

Patterson's House pictured below as guests were waiting for the opening



# COPLEY



Word of Jimmy's fabulous pies has got around so much so that even the local wildlife are hopping in, hoping for a taste!



The first of what promises to be many - the Copley Market was held on the last Saturday in June



The Copley Progress Association have been busy planting trees near the Information Bay



# 500 MILES OF MUSIC



## 500 Miles of Music

✦ THE COVID WON'T BEAT US LINEUP

Leigh Creek . Sun 27 Jun

## The Wolfe Brothers

**Matt Cornell**  
**Brad Butcher**  
**Kelly Brouhaha**  
**Matt James**  
**Andy Toombs**



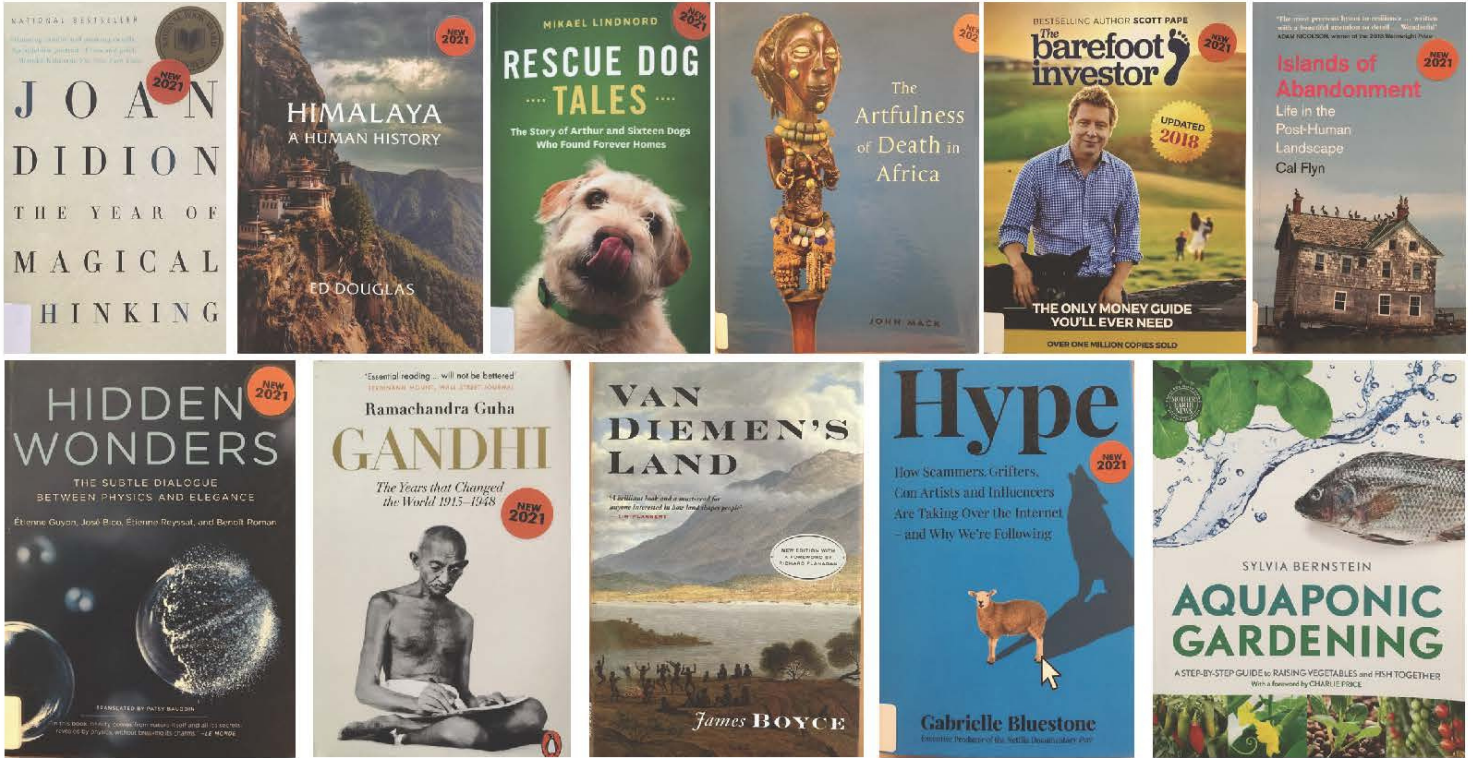
500milesofmusic.com





# LEIGH CREEK SCHOOL COMMUNITY LIBRARY

- Web [www.libraries.sa.gov.au/leighcreek](http://www.libraries.sa.gov.au/leighcreek)
- Email [library.leighcreek@gmail.com](mailto:library.leighcreek@gmail.com)
- Phone / Fax 8675 2803



One Card > Over 130 Libraries > Millions of Books, DVDs, CDs & Magazines

**CURRENT COMMUNITY  
OPENING HOURS**

**School Terms** Monday - Friday 8:30am - 5pm \* Saturday 9 - 1:30  
**School Holidays** Monday - Friday 1 - 5 \* Saturday 9 - 1:30